

NON-RIDER TRIP ITINERARY BY

Thomson



Tour de France Le Grand Départ

July 3 to 8

**TOUR DE
FRANCE**

**OFFICIAL PREMIUM
TOUR OPERATOR**

Itinerary



DAY	DESCRIPTION	HOTEL
01	<p>Bienvenue & VIP access to the Official Team Presentation!</p> <p>Your trip starts at Lille Europe Train Station where our staff will meet you before the short transfer to your hotel in Lille.</p> <p>After a brief orientation meeting and lunch we'll drive into downtown Lille to witness the Official Tour de France Team Presentation, a wonderful ceremony that kicks off the Tour de France by presenting the riders from each of the 22 teams that will compete for the yellow jersey over the next 3 weeks.</p>	Hotel Coloft Lille-Lesquin
02	<p>Visit Bruges</p> <p>Today you'll head into Belgium to visit one of the country's most stunning cities, Bruges. This is Belgium's most perfectly preserved medieval town, and its jaw-dropping, beautiful architecture attracts more than two million visitors a year. With its wealth of interesting old buildings and canals, Bruges still retains a distinct medieval air. Take a walk through the narrow streets and fall under its spell, charmed by the atmosphere of what many consider the most delightful city of the Flanders region of Belgium.</p>	Hotel Coloft Lille-Lesquin

Itinerary



DAY	DESCRIPTION	HOTEL
03	<p>LIVE Race-Viewing: The Opening Stage in Lille</p> <p>The 2025 Tour de France kicks off today with a magnificent stage, starting and finishing in Lille. This is a unique opportunity to witness both the start and the finish of the Opening Stage of the Tour de France. You'll have privileged access to the VIP Departure Village and the Team Paddock, a great place to mingle and meet the riders as they prepare for the start of the 1st stage of the Tour de France. After the official departure, enjoy lunch in Lille before rounding off an amazing Tour de France day by witnessing the Race Finish from the VIP Lounge at the Finish Line.</p>	Hotel Coloft Lille-Lesquin
04	<p>Lille City Tour</p> <p>As your cycling partner tackles the Paris-Roubaix cobbles, you'll enjoy a more leisurely day with a visit to downtown Lille. You'll discover the old world charm of the cobbled Vieux-Lille with its Flemish townhouses, boutiques, bars and the Hospice Comtesse Museum. From Vieux-Lille you'll head over to the Quartier Saint Sauveur to take in the Art Deco belfry (panoramic views from the top), the Porte de Paris (Lille's answer to the Arc de Triomphe) and nearby Gare Saint Sauveur, once a railway station now a hip space for culture and the arts. You'll round off the day with a walk to the Grand Place where you can enjoy a coffee at any one of the many cafés that line the perimeter of this magnificent square.</p>	Hotel Coloft Lille-Lesquin

Itinerary



DAY	DESCRIPTION	HOTEL
05	<p>Podium Photo Shoot & LIVE VIP Race-Viewing of the Stage Finish in Dunkirk</p> <p>Our cycling group will be riding across the Official Finish Line just a few hours before the peloton. Join your cycling partner at the Finish Line for an exclusive photo shoot on the Official Podium. You'll round off an amazing Tour de France day by witnessing the Race Finish from the VIP Lounge at the Finish Line in Dunkirk.</p>	Hotel Coloft Lille-Lesquin
06	<p>Au revoir!</p> <p>Sadly, your Tour de France trip to the Grand Départ has come to an end.</p> <p>Our private shuttle will drop you off at Lille Europe TGV Railway Station. From here you can catch a high-speed train to downtown Paris or to Paris Charles de Gaulle Airport.</p>	



What's Included



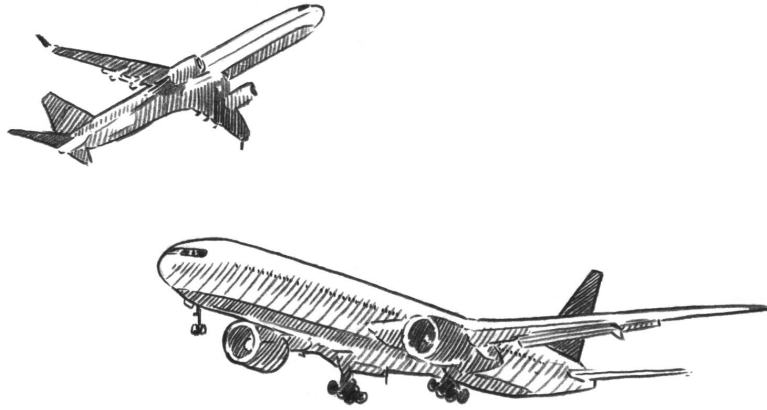
WHAT'S INCLUDED

- ☐ **Tour de France Viewing**
 - VIP access to the Official Team Presentation in Lille
 - Lille: VIP Departure Village & VIP Hospitality Lounge at the Stage Finish
 - Podium Photo Shoot & LIVE VIP Race-Viewing of the Stage Finish in Dunkirk
- ☐ **Accommodations & Meals**
 - 6 days / 5 nights fully accompanied trip
 - All accommodations
 - All breakfasts
 - All dinners
 - 3 x sit-down lunches
- ☐ **Transportation**
 - Pick-up & Drop-off at Lille Europe TGV Railway Station
 - All transportation during the trip
 - All luggage transfers

WHAT'S NOT INCLUDED

- ☐ **Airfare**
 - ☐ **Travel and personal insurance**
 - ☐ **Additional hotel expenses i.e. phone charges, mini-bar, gratuities**
 - ☐ **Staff gratuities**
-

Travel Details



Arrival

PICK-UP LOCATION AND TIME

Lille Europe TGV Train Station

(Direct trains from Paris downtown or CDG airport)

July 3 at 09:30am

Departure

DROP-OFF LOCATION AND TIME

Lille Europe TGV Train Station

(Direct trains to Paris downtown or CDG airport)

July 8 at 08:00am

Hotel



Hotel Coloft Lille-Lesquin

[View hotel website](#)



Tour de France Le Grand Départ

We hope this itinerary has whetted your appetite for a trip with Thomson Bike Tours.

Our best-in-class service starts from the moment you get in touch, so please feel free to drop us a line with any questions you may have. We look forward to welcoming you for an experience you will never forget.

Contact our dedicated team:
USA & CANADA: 206-678-2255
International: +34 938.945.167
Email: info@thomsonbiketours.com