

NON-RIDER TRIP ITINERARY BY

Thomson



Tour de France Pyrenees

July 14 to 20

**TOUR DE
FRANCE**

**OFFICIAL PREMIUM
TOUR OPERATOR**

Itinerary



DAY	DESCRIPTION	HOTEL
01	<p>Bienvenue en France!</p> <p>Your trip starts at Toulouse Blagnac Airport where our staff will meet you before the transfer to your hotel in St Lary. In the afternoon we'll organise a walk into St Lary town center, a very quaint mountain town with lots of lovely boutiques and coffee shops.</p>	Hotel Mercure, Saint Lary Soulan
02	<p>Ainsa visit</p> <p>Our hotel in St Lary is very close to Spain and today we've organised a day-trip over the border into Spain to visit the beautiful town of Ainsa. Sitting on a hill-top above the new town, the medieval town is a real gem to visit. Enjoy tapas and a glass of wine in the Plaza Major which dates back to the 12th century, then discover Ainsa's narrow medieval streets on a walk around the old town.</p>	Hotel Mercure, Saint Lary Soulan
03	<p>Pic du Midi Observatory</p> <p>Today, your cycling partner will be climbing the most famous climb in the Pyrenees, the Col du Tourmalet. You'll also head towards the Tourmalet, stopping at the ski station of La Mongie where you'll take the spectacular cable car to the Pic du Midi summit and observatory. After visiting this famous site, we'll continue on to the Col du Tourmalet where we may time it right to have a coffee with your partner at the café on the summit.</p>	Hotel Mercure, Saint Lary Soulan

Itinerary



DAY	DESCRIPTION	HOTEL
04	<p>LIVE Race-Viewing: VIP Lounge at the Stage Finish in Hautacam</p> <p>Our cycling group will be riding across the Official Finish Line in Hautacam just a few hours before the peloton. Join your cycling partner for a photo shoot on the Official Podium then round off the day by witnessing the Race Finish from the VIP Tribune at the Finish Line.</p>	Hotel Mercure, Saint Lary Soulan
05	<p>LIVE Race-Viewing: VIP Departure Village & Team Paddock access in Loudenvielle</p> <p>A unique experience today as you head over to the Stage Start in Loudenvielle with privileged access to the VIP Departure Village and Team Paddock, a great place to mingle and meet the teams and individual riders as they prepare for the start of today's stage.</p>	Hotel Mercure, Saint Lary Soulan
06	<p>Podium Photo Shoot & LIVE VIP Race-Viewing of the Stage Finish in Superbagnères</p> <p>A summit finish today on the famous climb to Superbagnères. Enjoy the atmosphere from the comfort of our Private Hospitality Marquee on the final climb. Food, drinks, and satellite TV race coverage will keep you entertained as you wait for the peloton to approach.</p>	Hotel Mercure, Saint Lary Soulan
07	<p>Au revoir et à bientôt!</p> <p>Sadly, your Tour de France trip has come to an end. Our private shuttle will drop you off at Toulouse Airport.</p>	



What's Included



WHAT'S INCLUDED

- Tour de France Viewing**
 - Stage 12: VIP Lounge at the Finish in Hautacam
 - TDF Stage 13: access to the VIP Departure Village & Team Paddock in Loudenvielle
 - Stage 14: access to our Private Hospitality Marquee on the climb to the Summit Finish in Superbagnères

- Accommodations & Meals**
 - 7 days / 6 nights fully accompanied trip
 - All accommodations
 - All breakfasts
 - All dinners
 - Most lunches

- Transportation**
 - Pick-up & Drop-off at Toulouse Airport
 - All transportation during the trip
 - All luggage & bike box transfers

WHAT'S NOT INCLUDED

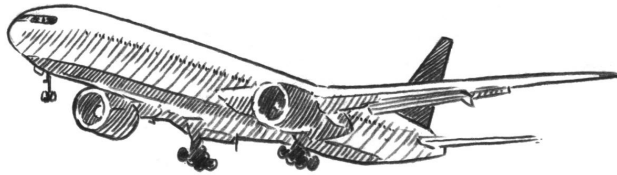
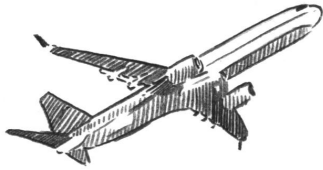
- Airfare**

 - Travel and personal insurance**

 - Additional hotel expenses i.e. phone charges, mini-bar, gratuities**

 - Staff gratuities**
-

Travel Details



Arrival

PICK-UP LOCATION AND TIME

Toulouse Blagnac Airport

July 14 at 8:30am

OR

Pullman Toulouse Airport Hotel

July 14 at 8:30am

[View Hotel website](#)

Departure

DROP-OFF LOCATION AND TIME

Toulouse Blagnac Airport

July 20 at 10:00am

Hotel



Hotel Mercure, Saint Lary Soulan

[View Hotel website](#)



Tour de France Pyrenees

We hope this itinerary has whetted your appetite for a trip with Thomson Bike Tours.

Our best-in-class service starts from the moment you get in touch, so please feel free to drop us a line with any questions you may have. We look forward to welcoming you for an experience you will never forget.

Contact our dedicated team —
USA & CANADA: 206-678-2255
International: +34 938.945.167
Email. info@thomsonbiketours.com